

**1** FRONT FRAME – 3/4" thick kiln dried solid hardwood (wood door styles) or thermofoil vinyl wrapped solid finger jointed lumber or LVL linear veneer lumber (thermofoil and laminate door styles). Bore and dowel or pocket screw construction frame joinery reinforced with glue and nail. Stiles 1 1/2" wide. Mulls 3" wide. Rails 1 3/4" wide. Stiles and top and bottom rails dadoed to receive ends, tops, and bottoms.

**2** END PANELS – **Standard:** Nominal 1/2" (12mm) thick wood based composite panel dadoed to receive tops and bottoms, with wood grained or white laminate on exterior surface. Maple grained or white laminate on interior surface. All end panels are inserted into dado in face frame and recessed 3/16". **Upgrade:** Nominal 1/2" (12mm) thick multi-ply hardwood plywood with oak, maple, or cherry veneer on exterior surface and birch veneer on interior surface. All end panels are constructed with the same dado joinery as above and are recessed 3/16".

**3** TOP/BOTTOM PANELS – Nominal 1/2" (12mm) thick wood based composite panel with maple grained or white laminate on exterior and interior surfaces for wall cabinets and interior surface for base cabinets. Tops and bottoms are set into grooved end panels and front rails glued and stapled. Bottoms are supported at rear of base cabinet by nominal 1/2" (12mm) thick wood base composite panel.

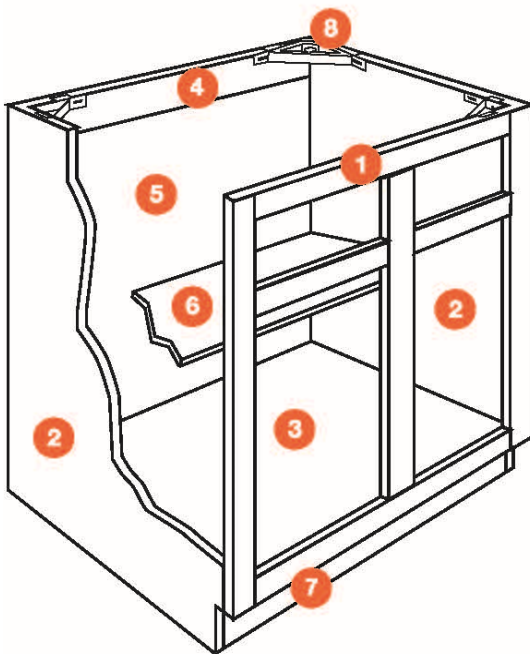
**4** HANGING RAILS – Wall cabinets have nominal 1/2" (12mm) thick x 2 7/8" high multi-ply hardwood plywood hanging rail running full cabinet width at top and bottom. Base cabinets have nominal 1/2" (12mm) thick x 2 7/8" high wood based composite panel hanging rail running full cabinet width at top. Hanging rails are captured between end panels recessed behind back panel for Wall cabinets and in front of back panels for Base and Tall cabinets. Tall cabinets have nominal 3/4" (18mm) thick x 3" high multi-ply hardwood plywood hanging rail running full cabinet width at top.

**5** BACK PANEL – Nominal 1/8" (3mm) thick hardboard with maple grained or white interior surface. Securely glued and stapled to end panels and hang rails. Back panels are fully captured on wall cabinets.

**6** SHELVES – Nominal 5/8" (15mm) thick wood based composite panel with maple grained or white laminate on both faces and matching edgeband on facing edge. Shelves are adjustable in all standard wall and base cabinets.

**7** TOE KICK – Nominal 1/2" (12mm) thick unfinished wood based composite panel captured between end panels. Toe kick is 4" high and recessed 3 3/8".

**8** BASE CORNER BRACES – High impact, injection molded plastic.



**DRAWERS** – Standard: Nominal 1/2" (12mm) thick multi-ply hardwood front, back, and sides. Drawer bottoms are nominal 1/4" (6mm) thick multi-ply hardwood inserted into dado in front, back and sides. All drawer parts glued and stapled together.

**DRAWER GUIDES** – High-quality epoxy coated steel, Cushion-Tec™, side mounted guides, self-adjusting in mounting brackets. Built-in stop, self-closing and stay-closed features with a 100 lb. rated load capacity.

**DOVETAIL DRAWER** (upgrade only) – Front, back and sides are 5/8" (16mm) thick solid beech hardwood with dovetail construction. Drawer bottoms are nominal 1/4" (6mm) thick multi-ply hardwood birch plywood inserted into dado in front, back, and sides. Drawer bottoms are glued and stapled to sides.

**UNDERMOUNT DRAWER GUIDE** (standard with dovetail drawer only) – High-quality steel, undermount construction provides full drawer access. Self-adjusting in mounting brackets. Built-in stop, self-closing, and stay closed features with a 75 lb. rated load capacity.

**SOFT-CLOSE UNDERMOUNT DRAWER GUIDE** (deluxe upgrade with dovetail drawer only) – High-quality steel, undermount construction provides soft-close feature that helps reduce drawer slamming. Drawers are full extension, self-adjusting in mounting brackets. Built-in stop, self-closing, and stay closed features with a 100 lb. rated load capacity.

**HINGES** – Standard: Heavy-duty, high-quality steel, concealed 6-way adjustable hinge with self-closing feature. Optional:

High-quality steel wrap-around hinge with self-closing feature (standard reveal door styles only). Upgrade: Gentle-Touch (soft-close) Hinge: Heavy-duty, high-quality steel, concealed 6-way hinge with 3 adjustable levels of soft close resistance.

**FINISH** – Furniture quality protective finish system on doors, drawer fronts, front frames, and veneer plywood end panels consisting of sanding, stain, catalyzed sealer and catalyzed clear top coats.

Echelon™  
CABINETRY

[www.EchelonCabinetry.com](http://www.EchelonCabinetry.com)



Echelon Cabinetry is part of the Kitchen Cabinet Manufacturers Association (KCMA) and the National Kitchen and Bath Association (NKBA). Echelon Cabinetry carries the ANSI/KCMA A161.1 quality assurance certification.